

For rent



**Rijswijkseweg 63
2516 EE Den Haag**

Features

Price	€ 1.350 p.m. ex.
Status	Rented
Acceptance	Directly
Apartment type	Upper floor apartment, apartment
Bottom floor	5
Build type	Existing
Year of construction	1995
Location	In town center
Living surface	87m ²
Volume	250m ³
Bedrooms	2
Floors	1
Energy label	C
Shed	Indoor
Garage type	Indoor, parking spot
Capacity	1

Alle vermelde afmetingen zijn indicatief en kunnen afwijken van de werkelijkheid.

Description

RIJSWIJKSEWEG 63- STATIONSBUURT

Well maintained 3-room apartment on the 4th floor with a spacious and sunny terrace at the rear with unobstructed views over the water of the new Laakhaven. The house also has a front balcony, an indoor storage room as well (a fixed parking space in the underground closed basement). This apartment is situated in a small apartment complex (built in 1995). It is in the immediate vicinity of various roads and public transport connections and has a very central location in relation to shops, The Hague University and Hollands Spoor station. The center of The Hague is within walking distance and the lively center of Rijswijk is within cycling distance.

Layout:

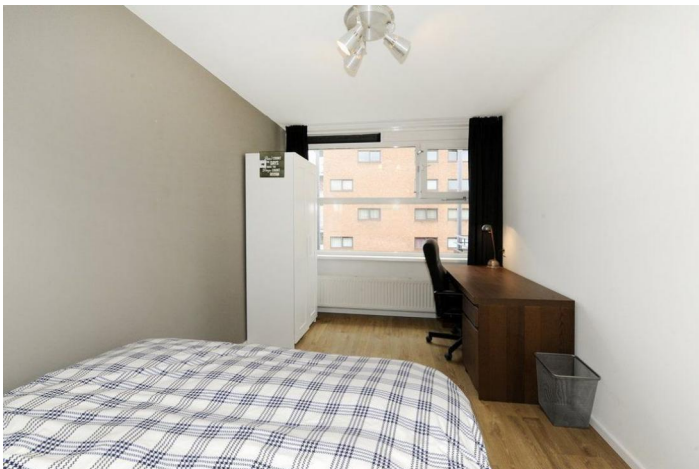
Closed well-kept porch, elevator or stairs to the 4th floor, entrance, hallway with intercom, meter cupboard with unit for district heating, toilet with sink, spacious storage / provision room (approx. 1.50 x 1.50) with washing machine connection. Spacious and bright L-shaped living / dining room (approx. 10.80 x 5.45 / 2.55) with access to sunny back terrace (approx. 5.75 x 1.65) located on the southwest, modern open kitchen with various built-in appliances. From the living room access to the front balcony over the full width of the living room.

Master bedroom (approx. 4.42x2.82) and 2nd bedroom (approx. 4.42 x 2.70) at the rear, bathroom with shower, washbasin, mechanical ventilation and washing machine connection. Separate basement storage in the basement.

Particularities:

- Rent is excluding GWL
- Upholstered (NO furniture)
- Storage
- Indoor parking
- Not suitable for home sharers
- Pets are not allowed
- Housing permit required

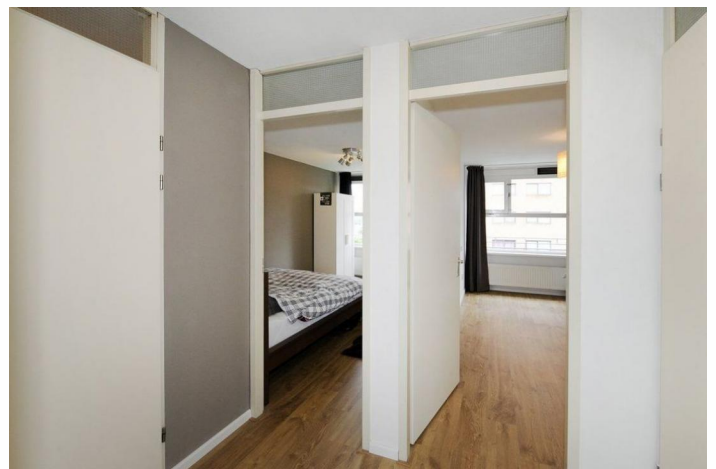
Photos



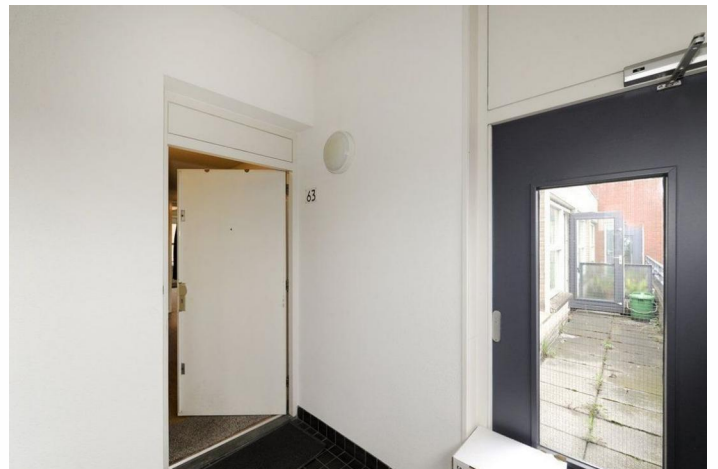
Photos



Photos



Photos



Photos

