

For sale



Sumatrastraat 282
2585 CX Den Haag

Features

Status	Sold
Acceptance	In consultation
House type	Single family, terraced house, patio house
Build type	Existing
Year of construction	1869
Particulars	Protected town view
Living surface	90m ²
Plot surface	50m ²
Other surface	2m ²
Volume	335m ³
Bedrooms	3
Bathrooms	1
Floors	2
Energy label	C
Isolation	No cleft
Hot water	Central heating
Heating	Central heating
Furnace	(2008, combined furnace)

Alle vermelde afmetingen zijn indicatief en kunnen afwijken van de werkelijkheid.

Description

SUMATRASTRAAT 282 ARCHIPEL

Located in the popular Archipel neighbourhood, a 5-room courtyard house of approx. 90m² with three bedrooms and a loft. This unique and charming house originally consists out of 2 houses which have been formally merged.

Living in the Archipel is living in an international neighborhood with character, equipped with all comforts. There is, for example, the pleasant Bankastraat with terraces, restaurants and a varied range of shops, including Albert Heijn, Gall and Gall and well-known delis. Within a few minutes you are on the highways to Amsterdam, Rotterdam and Utrecht. Tram and bus stop are around the corner. The Hague Central Station is within walking distance. The center of The Hague as well as the boulevard of Scheveningen can be reached in about 10 minutes by bike! In addition, there is a wide range of childcare and (primary) schools within walking and cycling distance.

The house is a stone's throw from the (inter)national organizations of The Hague.

The International Criminal Court, Shell, OPCW and Europol are located in the immediate vicinity. This house is therefore also ideal for expats.

Layout: (dimensions in floor plan).

Entrance hall with meter cupboard and door to the dining room with open kitchen in L-shaped arrangement and a well-functioning, cozy fireplace. Fixed stairs to the first floor. From the dining room access to the living room. In the living room there is also a staircase to the upper floor and a toilet room with a connecting door.

1st floor

Landing accessible via the stairs from the living room, first bedroom with a loft bed, second bedroom, passage to third bedroom which is also accessible via the staircase in the dining room. Bathroom with second toilet, shower, sink and washing machine connection.

Vide of approx. 20m² accessible by a fixed staircase. Under these stairs and in the third bedroom are a number of custom built cupboards.

Outside there is plenty of space for greenery and a place to sit comfortably. Fully south-facing, so sun all day long. A hidden, quiet oasis in the middle of the city!

Particularities:

- own ground
- Year of construction 1869
- Nationally protected city/village view
- Delivery in consultation
- old age clause will be included in the NVM model purchase agreement.

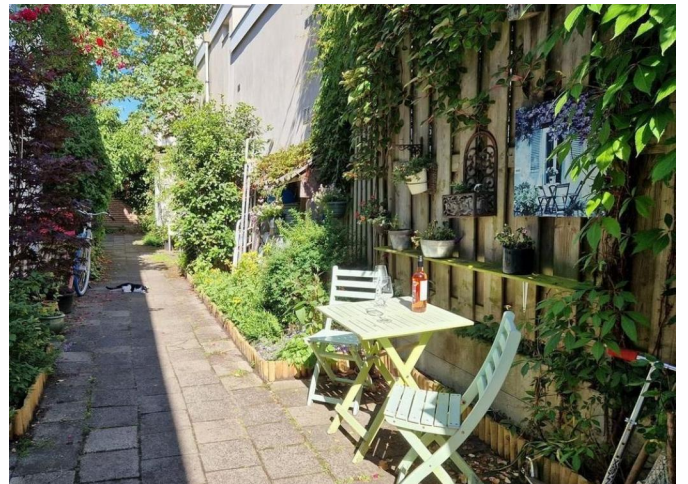
Description

Interested in this property? Immediately engage your own NVM purchasing broker. Your NVM purchase broker stands up for your interests and saves you time, money and worries.

You will find addresses of fellow NVM purchase brokers in Haaglanden on Funda.

This information has been compiled by us with the necessary care. However, no liability is accepted on our part for any incompleteness, inaccuracy or otherwise, or the consequences thereof.

Photos



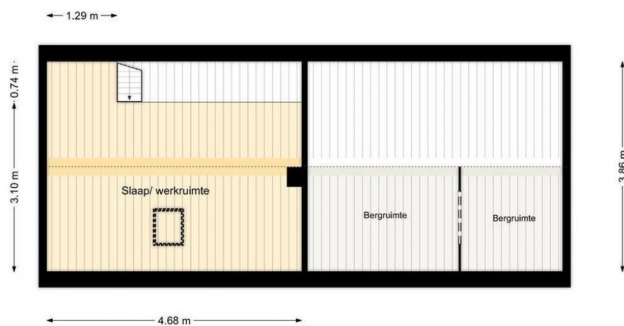
Photos



Photos



SUMATRASTRAAT 282
1e Verdieping
Hoogte 3.17m



SUMATRASTRAAT 282
Vliering
Hoogte 1.62/ 0.0m



SUMATRASTRAAT 282
Perceel

Photos

