

For sale



Parelmoerhorst 302
2592 SL Den Haag

Bankastraat 66
2585 EP Den Haag

Telefoon +31 (0)70 - 404 98 98
e-mail info@hekking.nl



Features

Homeowners association costs	€ 152
Status	Sold
Acceptance	In consultation
Apartment type	Upper floor apartment, apartment
Bottom floor	4
Build type	Existing
Year of construction	1959
Location	Near edge of forest, on the waterfront, near park, clear view
Particulars	Elderly accessible, special needs accessible
Living surface	74m ²
Volume	200m ³
Bedrooms	2
Bathrooms	1
Floors	1
Facilities	Cable tv, lift
Energy label	D
Isolation	Partial insulated glazing
Hot water	Central heating
Heating	Central heating
Furnace	Kombi kompakt hre (2018, owned)
Balcony	Yes
Shed	Indoor
Shed facilities	Electricity

Alle vermelde afmetingen zijn indicatief en kunnen afwijken van de werkelijkheid.

Description

PARELMOERHORST 302 MARIAHOEVE

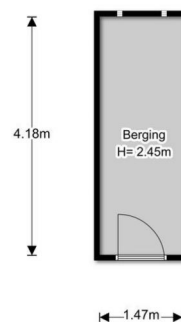
Photos



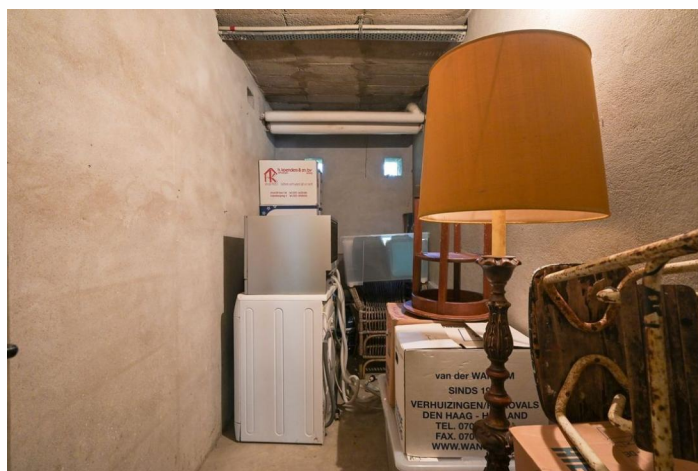
Photos



Photos



De plattegronden zijn gemaakt voor promotionele doeleinden en ter indicatie.
Aan de plattegronden kunnen geen rechten worden ontleend ©Brickmedia.nl



Photos

