

For sale



Deltapromenade 443
2554 GX Den Haag

Features

Price	€ 1.399.000 k.k.
Homeowners association costs	€ 324
Status	Available
Acceptance	In consultation
Apartment type	Upper floor apartment, apartment
Bottom floor	5
Build type	Existing
Year of construction	2020
Location	Clear view, open location, by the sea
Living surface	151m ²
Volume	504m ³
Bedrooms	3
Bathrooms	2
Floors	1
Facilities	Mechanical ventilation, cable tv, lift, balanced ventiaition
Energy label	A+
Isolation	Fully isolated, hr-glass
Hot water	Central supply, geothermal
Heating	Heated floor, Heat recovery installation, Geothermal
Shed	Indoor

Alle vermelde afmetingen zijn indicatief en kunnen afwijken van de werkelijkheid.

Description

Deltapromenade 443, Nieuw Kijkduin.

FRONT ROW SEASIDE APARTMENT!

Unique 4-room apartment (approx. 150m²) with a spacious terrace (approx. 60m²) offering sea views, located in the newly built "Lombarde" complex.

This fantastic penthouse-style apartment is located on the fifth floor and features a unique L-shaped terrace (approx. 60m²) with both sea and city views.

The apartment is extremely energy-efficient thanks to underfloor heating and cooling via a geothermal energy storage system and includes a private parking space in the underground parking garage.

Thanks to its corner location and the numerous floor-to-ceiling windows, this is an exceptionally bright apartment.

Living in Nieuw Kijkduin means enjoyment in all seasons.

This apartment is located directly in the shopping district, right next to the Daily Taste food market, the Plus supermarket, various luxury shops in the Winkelpromenade, and high-quality restaurants on the boulevard.

Public transport to The Hague City Center and Central Station is also just around the corner. Highways are easily accessible via the Zuidelijke Randweg (Southern Ring Road). Everything about this home exudes quality and attention to detail, from the materials to the finishing touches. Ready for those seeking comfort, luxury, and a unique location.

Layout:

Entrance via a secure central hall, elevator to the 5th floor, access to the apartment. L-shaped hall, toilet, indoor storage room with utility room, and a shell (guest) bathroom.

Living/dining room (approx. 57m²) with space and connections for a shell kitchen. From the living room, double doors open onto the lovely terrace with sea views and the morning, afternoon, and evening sun.

Master bedroom (approx. 25m²) with a shell bathroom of approximately 8m².

Two bedrooms, respectively, approximately 13m². All bedrooms have access to the terrace.

Details:

- The property is delivered shell! Kitchen layout, bathrooms, plumbing, etc. not included.
- Located on freehold land
- Dedicated parking space in the underground parking garage
- Indoor storage room;
- Front-row sea view;
- Floor-to-ceiling windows;
- Underfloor heating and cooling throughout the apartment via a geothermal energy system;
- Energy label A++; - Securely locked main entrance with video intercom;

Description

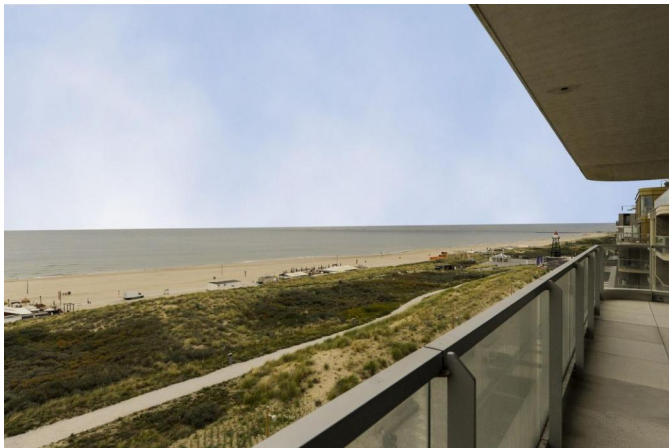
- 3 bedrooms
- Delivery negotiable, can be done quickly.
- Active homeowners' association with a monthly fee of €337.

* De Meetinstructie is gebaseerd op de BBMI. De Meetinstructie is bedoeld om een meer eenduidige manier van meten toe te passen voor het geven van een indicatie van de gebruiksoppervlakte. De Meetinstructie sluit verschillen in meetuitkomsten niet volledig uit, door bijvoorbeeld interpretatieverschillen, afrondingen of beperkingen bij het uitvoeren van de meting.

Interesse in dit huis? Schakel direct uw eigen NVM-aankoopmakelaar in. Uw NVM-aankoopmakelaar komt op voor uw belang en bespaart u tijd, geld en zorgen. Adressen van collega NVM-aankoopmakelaars in Haaglanden vindt u op [Funda.nl](https://www.funda.nl)

Deze informatie is door ons met de nodige zorgvuldigheid samengesteld. Onzerzijds wordt echter geen enkele aansprakelijkheid aanvaard voor enige onvolledigheid, onjuistheid of anderszins, dan wel de gevolgen daarvan.

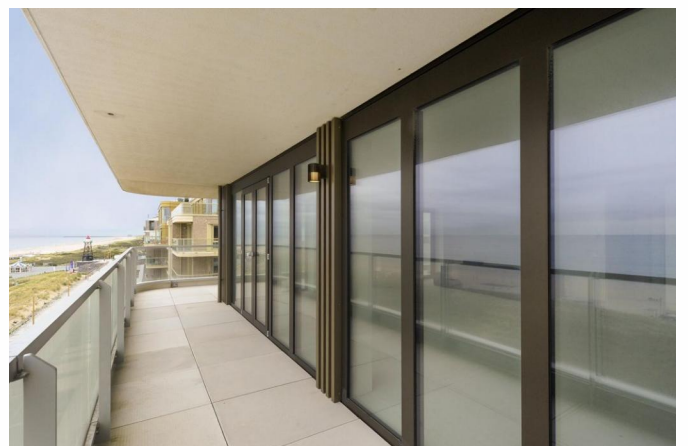
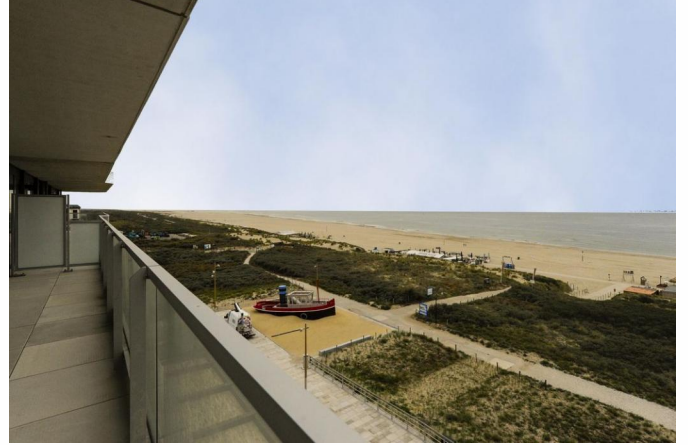
Photos



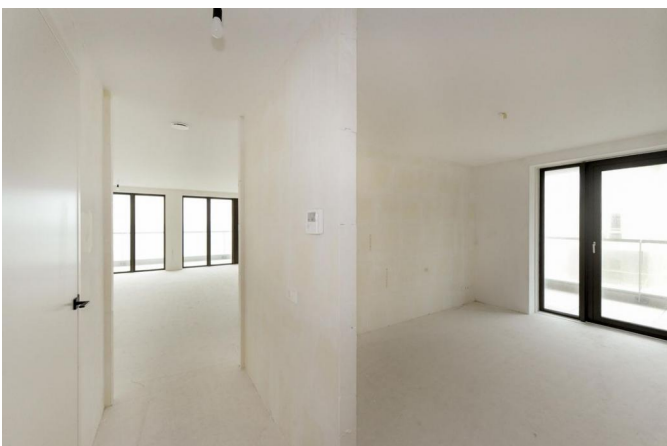
Photos



Photos



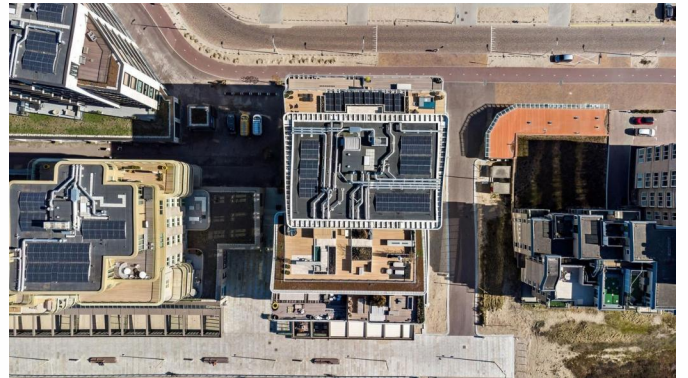
Photos



Photos



Photos



Photos



Photos

